

# Population statistics in the shadow of the corona pandemic

Tomas Johansson

Population statistics

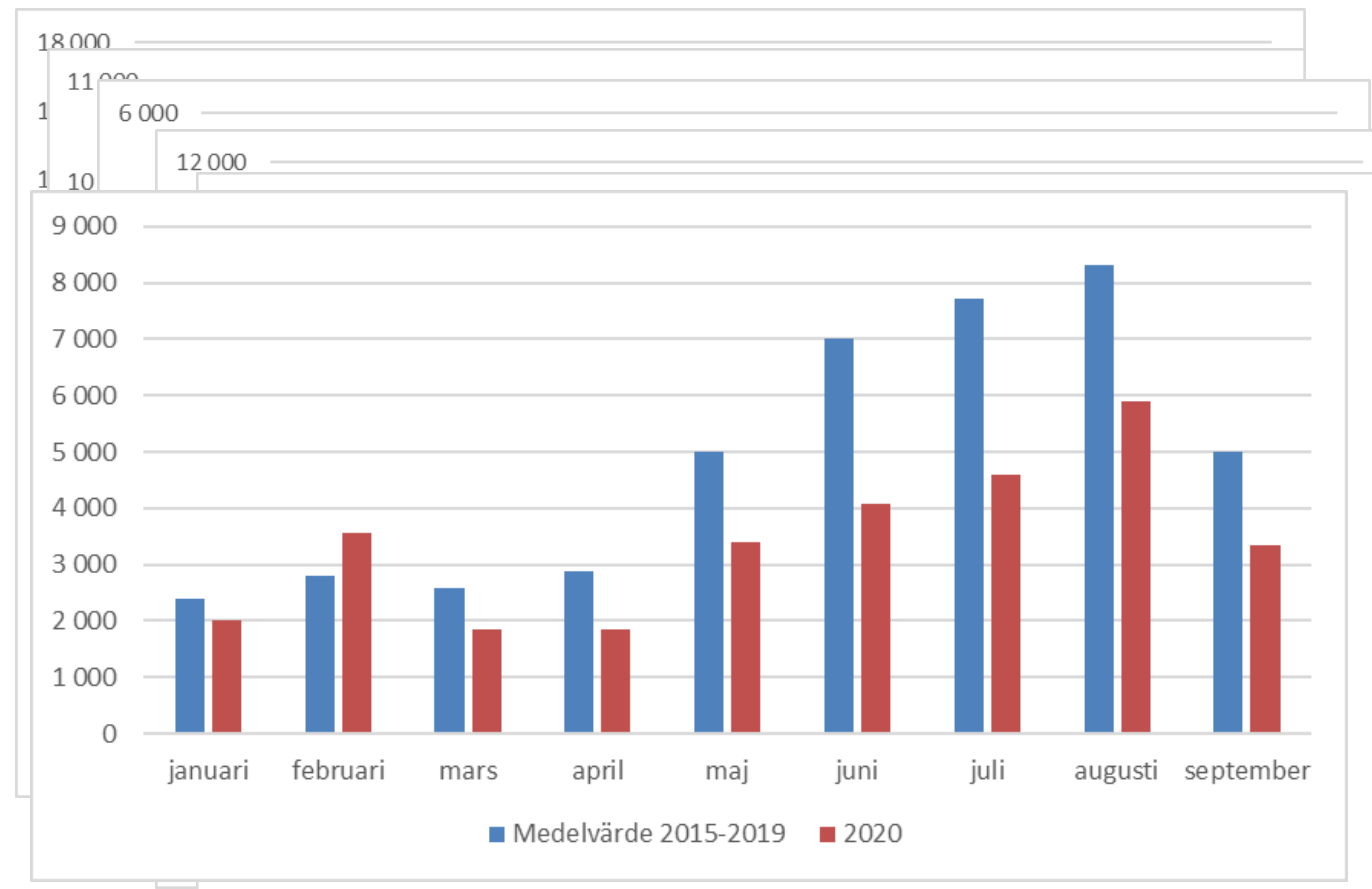
Population and Economic Welfare

Population and Welfare Department



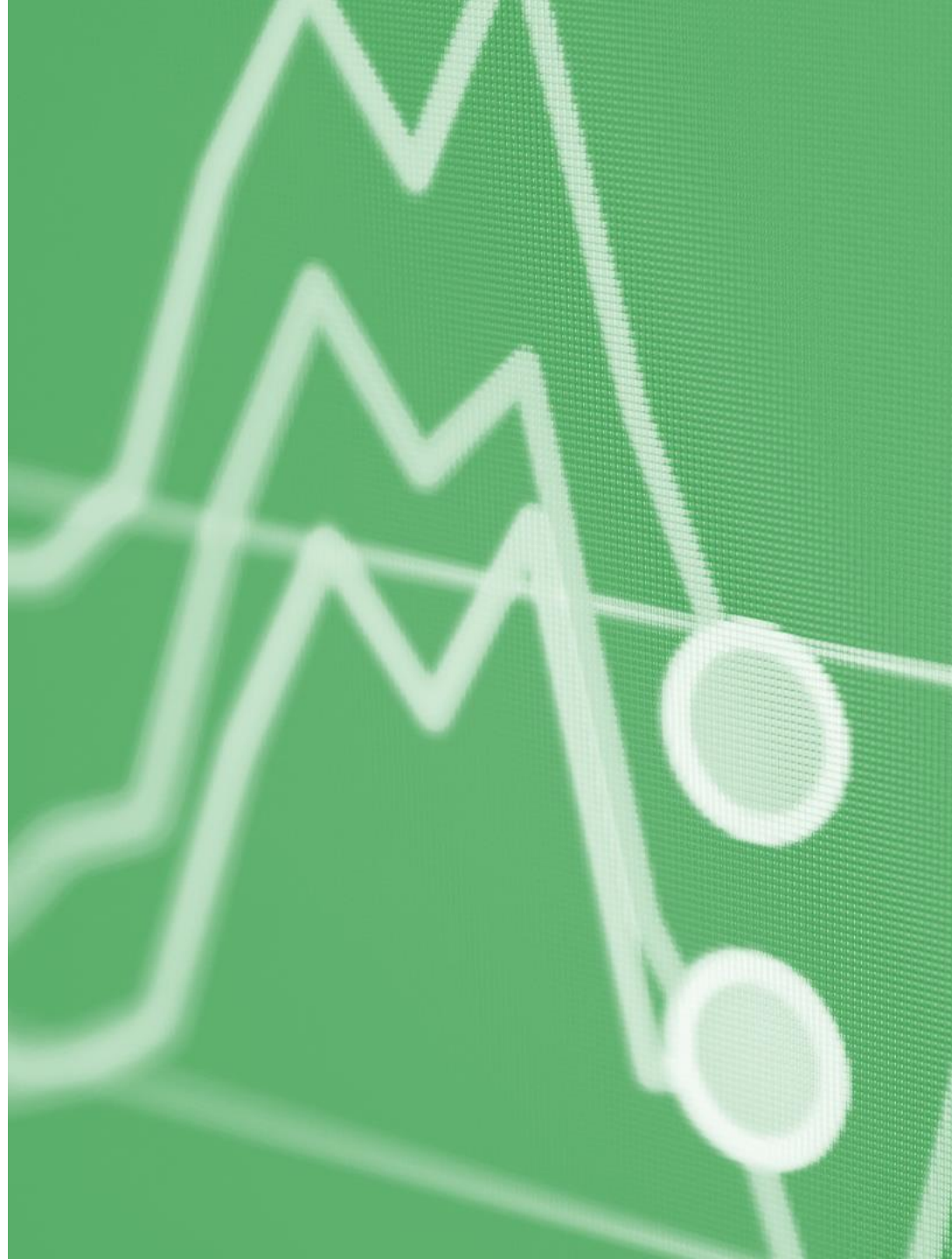
# Population statistics in 2020

- Immigration
- Births
- Emigration
- Deaths
- Low Population increase
- Marriages



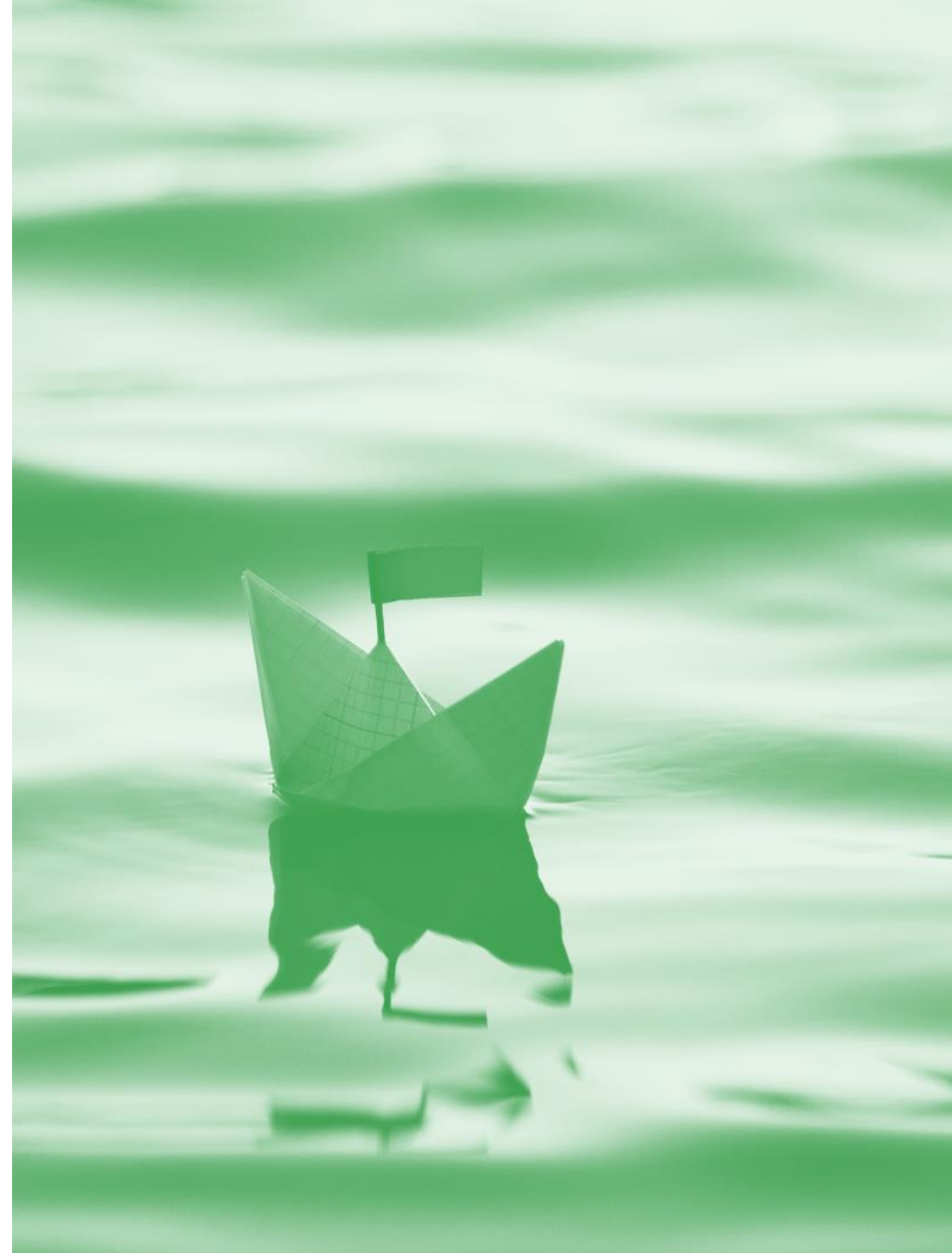
# Introduction

- Deaths regardless of cause of death
- Publish on Mondays
- Deaths until Friday the week before
- Started April 3rd
- 34 updates



# Population statistics

- Register-based
- Administrative register at the Tax Agency
- Registered persons
- 12 months criteria
- Register on population/events
- Notifications “daily”
  - Births
  - Deaths
  - And more



# About the statistics

- 12 Tables
  - Deaths by day, week and Month
  - Deaths by county and Municipality
  - Deaths by Age and sex
  - Deaths by Country of birth
- Deaths during 2020 compared to 2015-2019
- <https://www.scb.se/hitta-statistik/statistik-efter-amne/befolkning/befolkningens-sammansattning/befolkningsstatistik/pong/tabell-och-diagram/preliminar-statistik-over-doda/>



# Excess Mortality

- Simple model
  - The number of deaths in 2020 in relation to the number of deaths during the same period in the years 2015-2019
- Comparison period
  - Years with high and low death toll
  - Similar population composition
  - Life expectancy has changed little

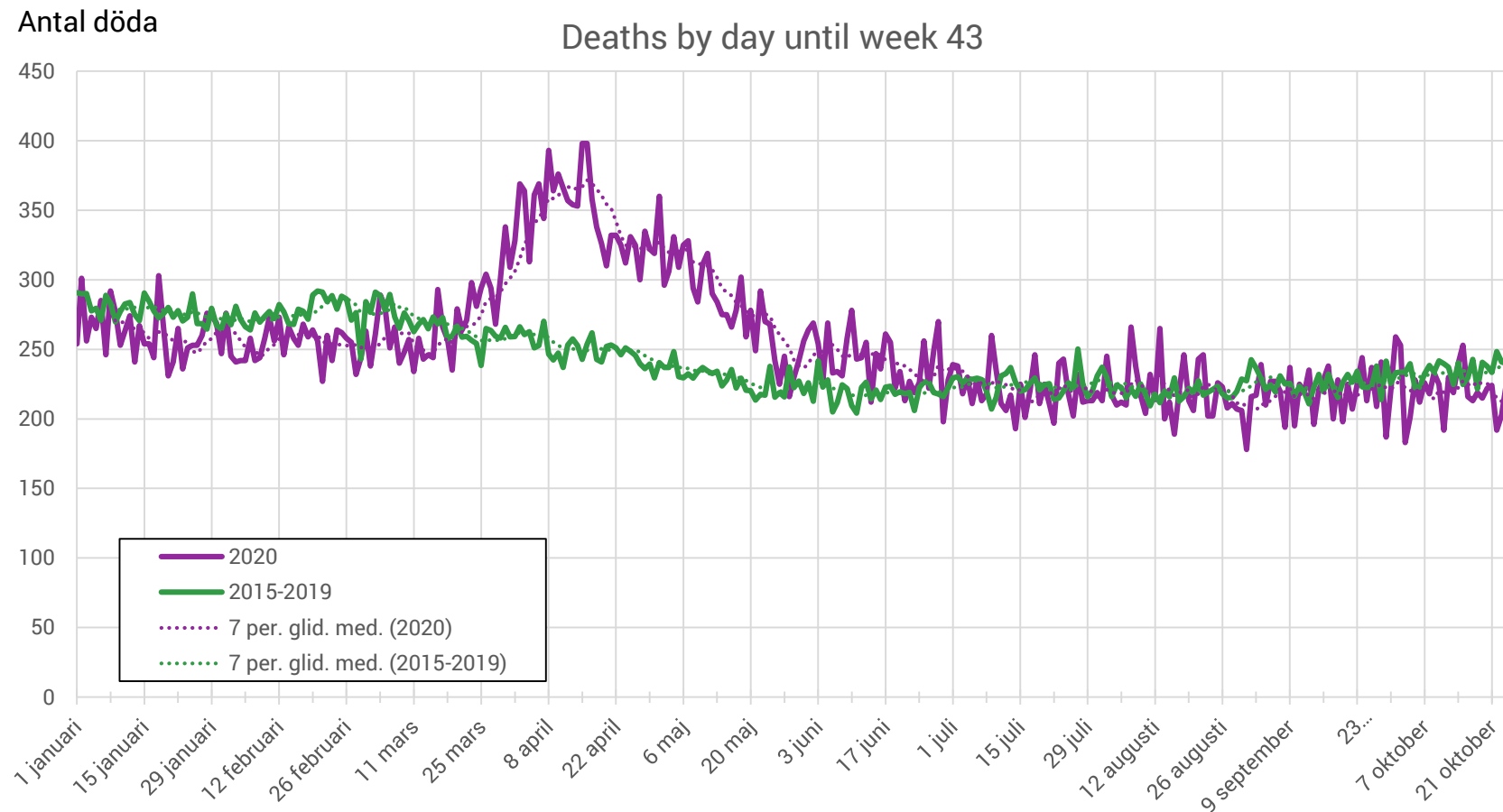


# Media

- Press releases
- A lot of attention
  - Media
  - Public
  - Public authorities
- Many emotions
  - Exaggerates the situation
  - Hides the truth

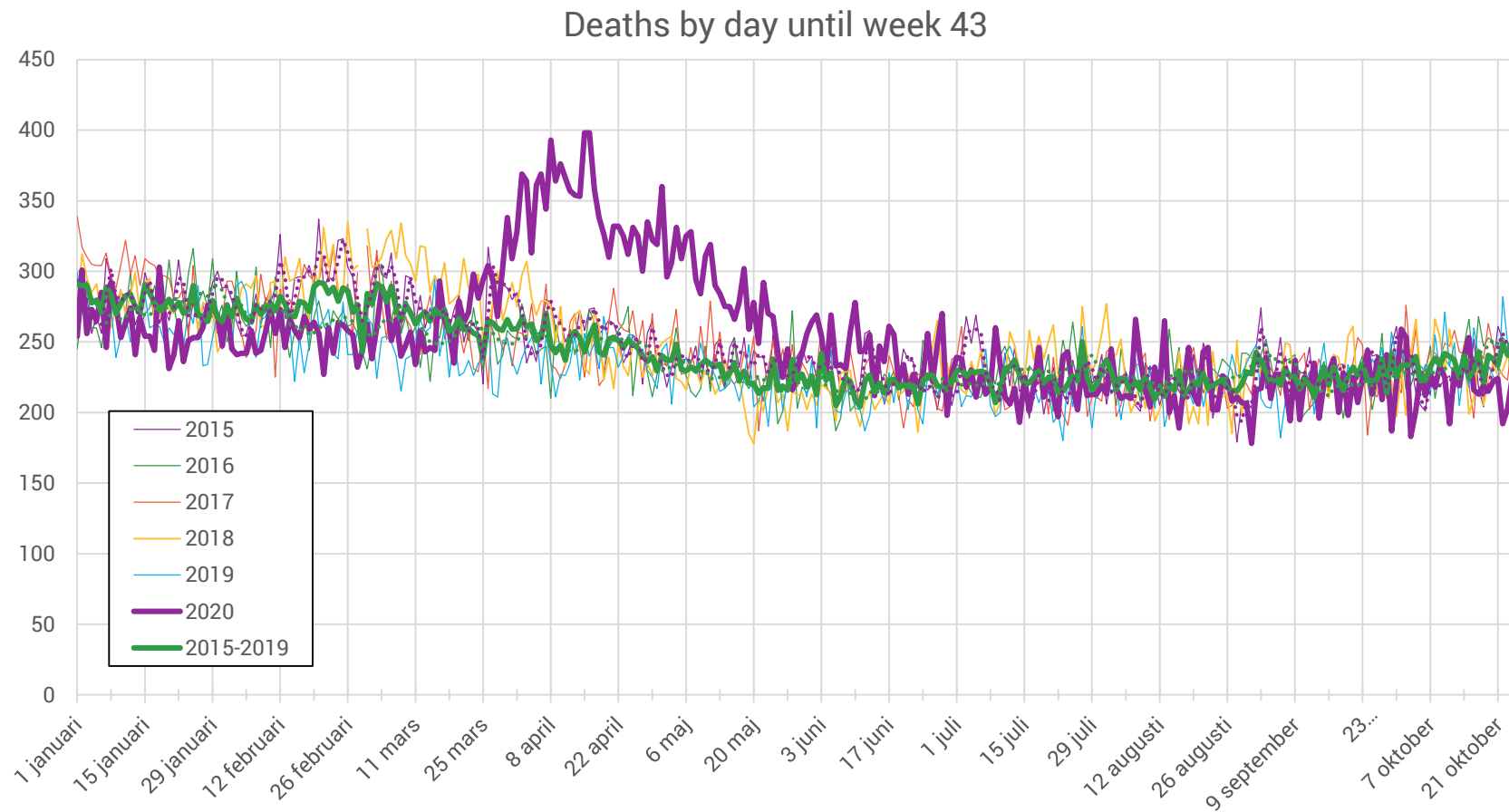


# Some statistics

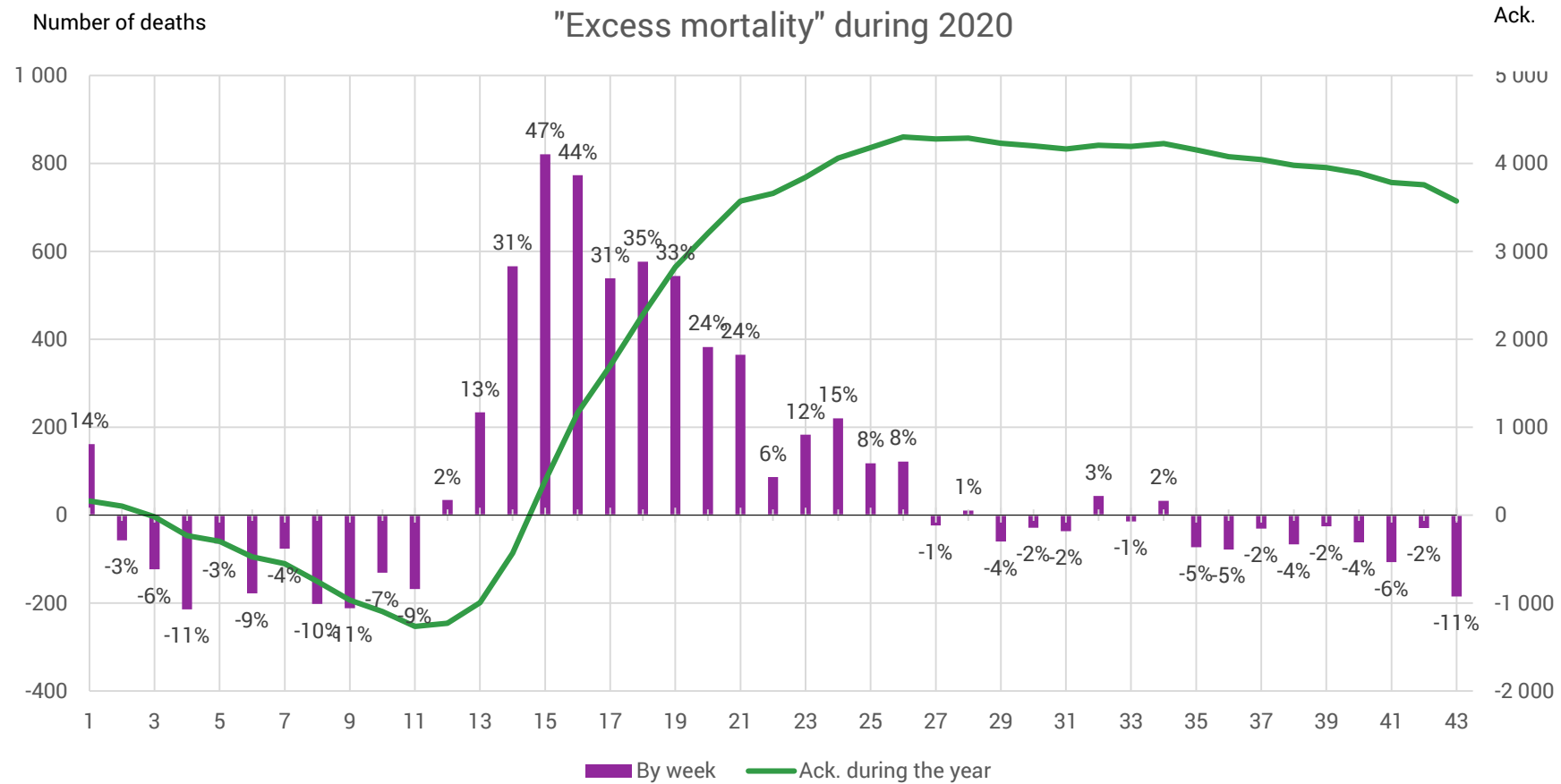




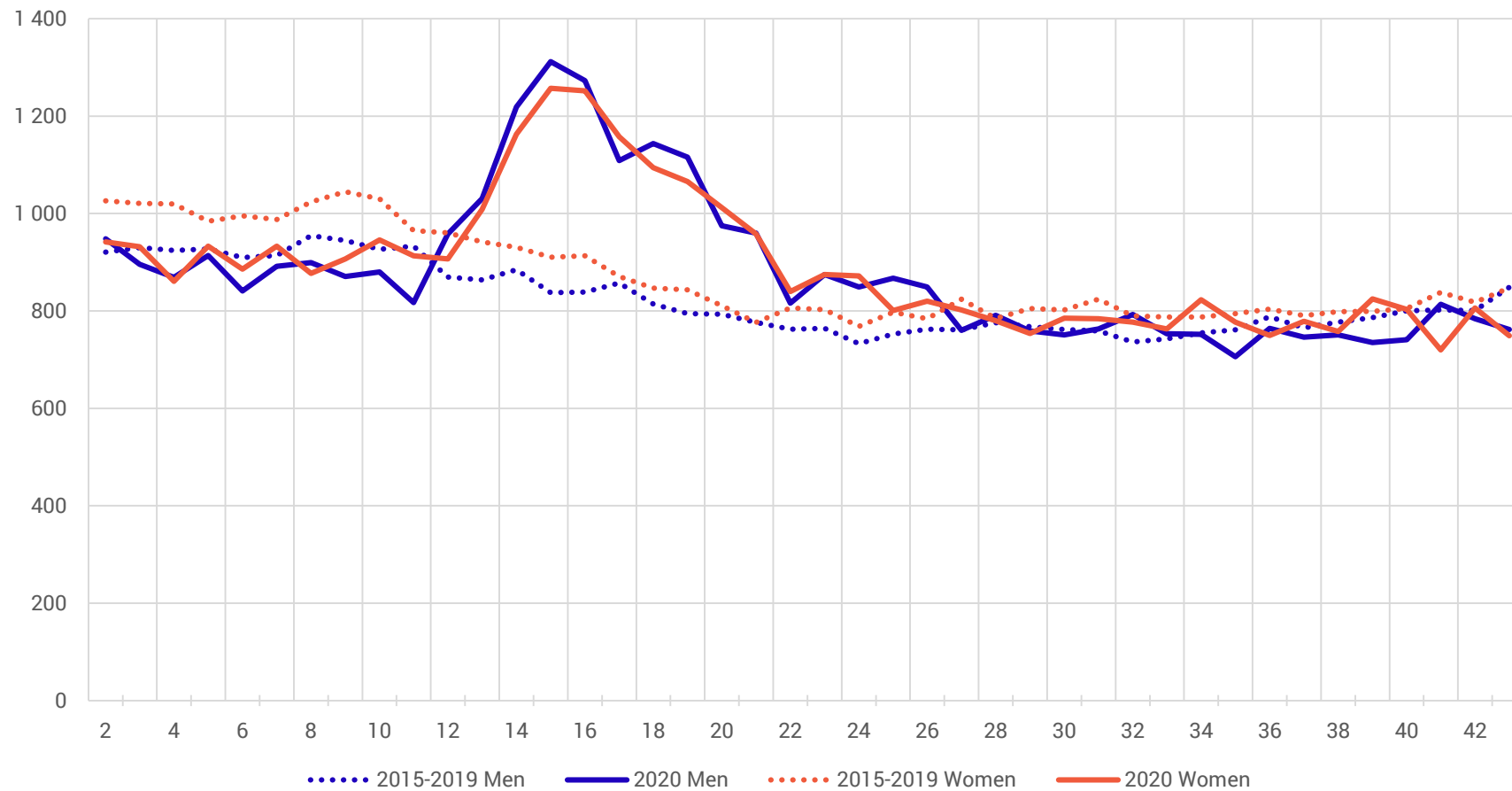
# Some statistics



# Some statistics



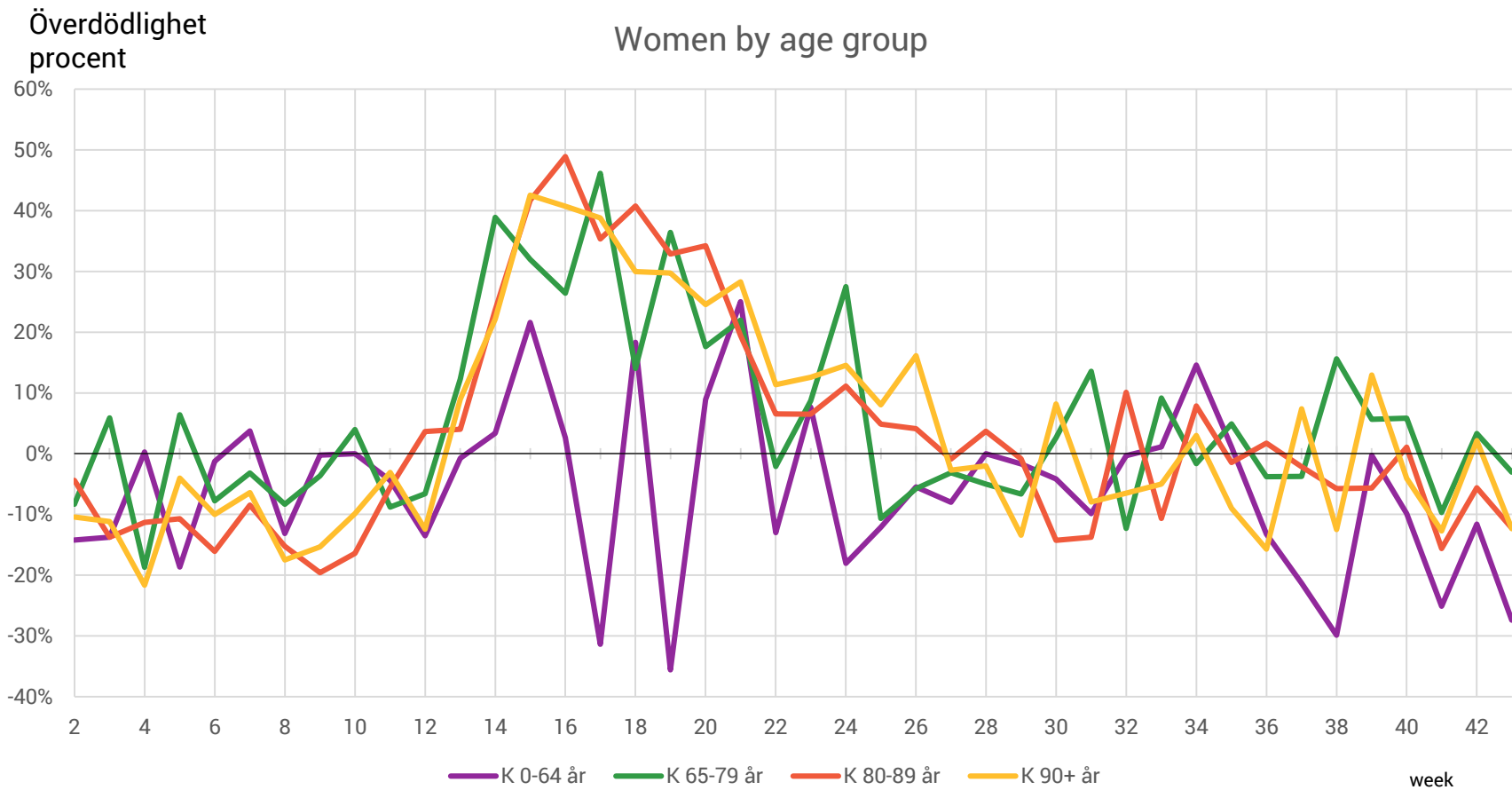
# Some statistics



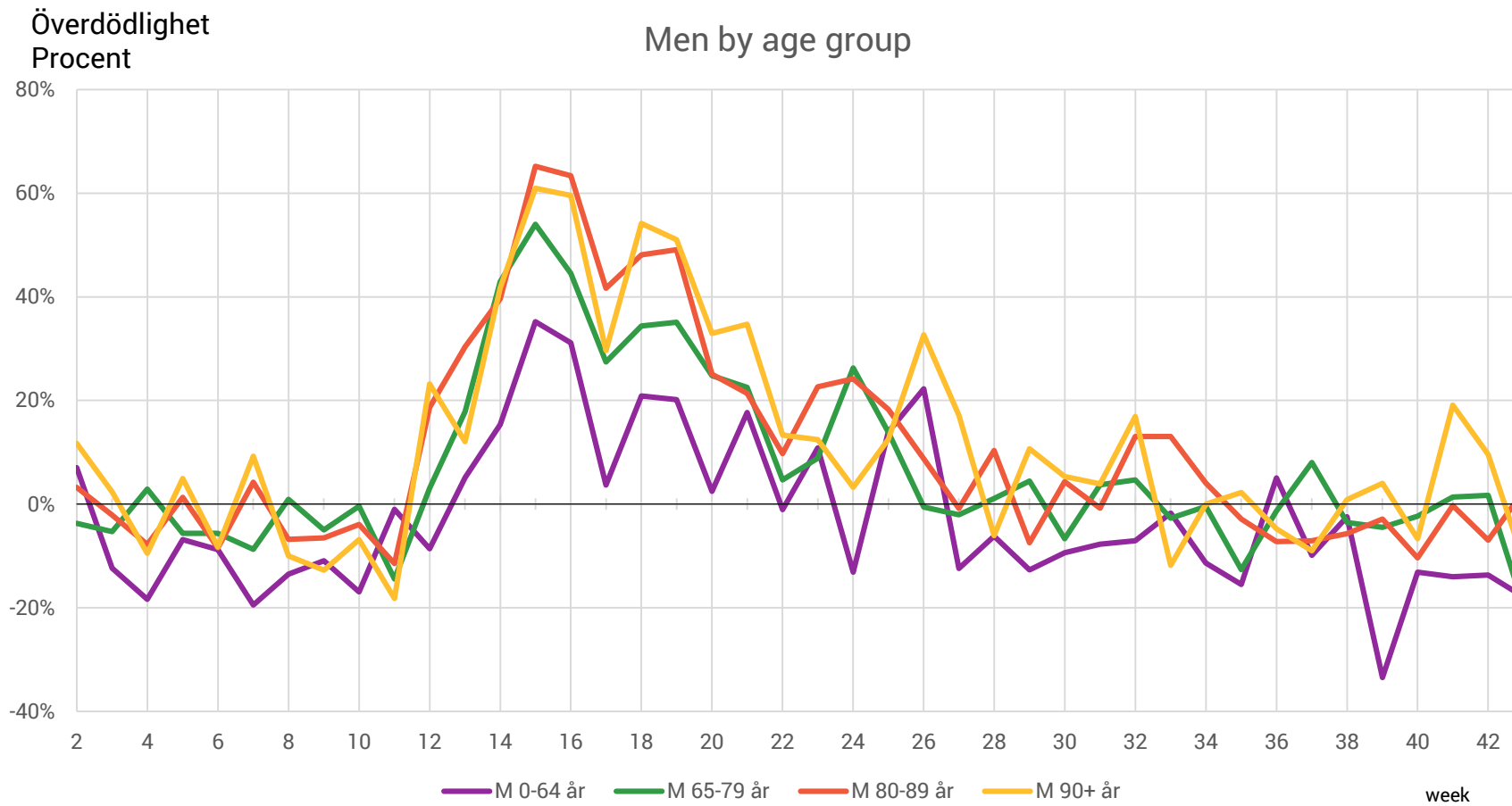
# Some statistics



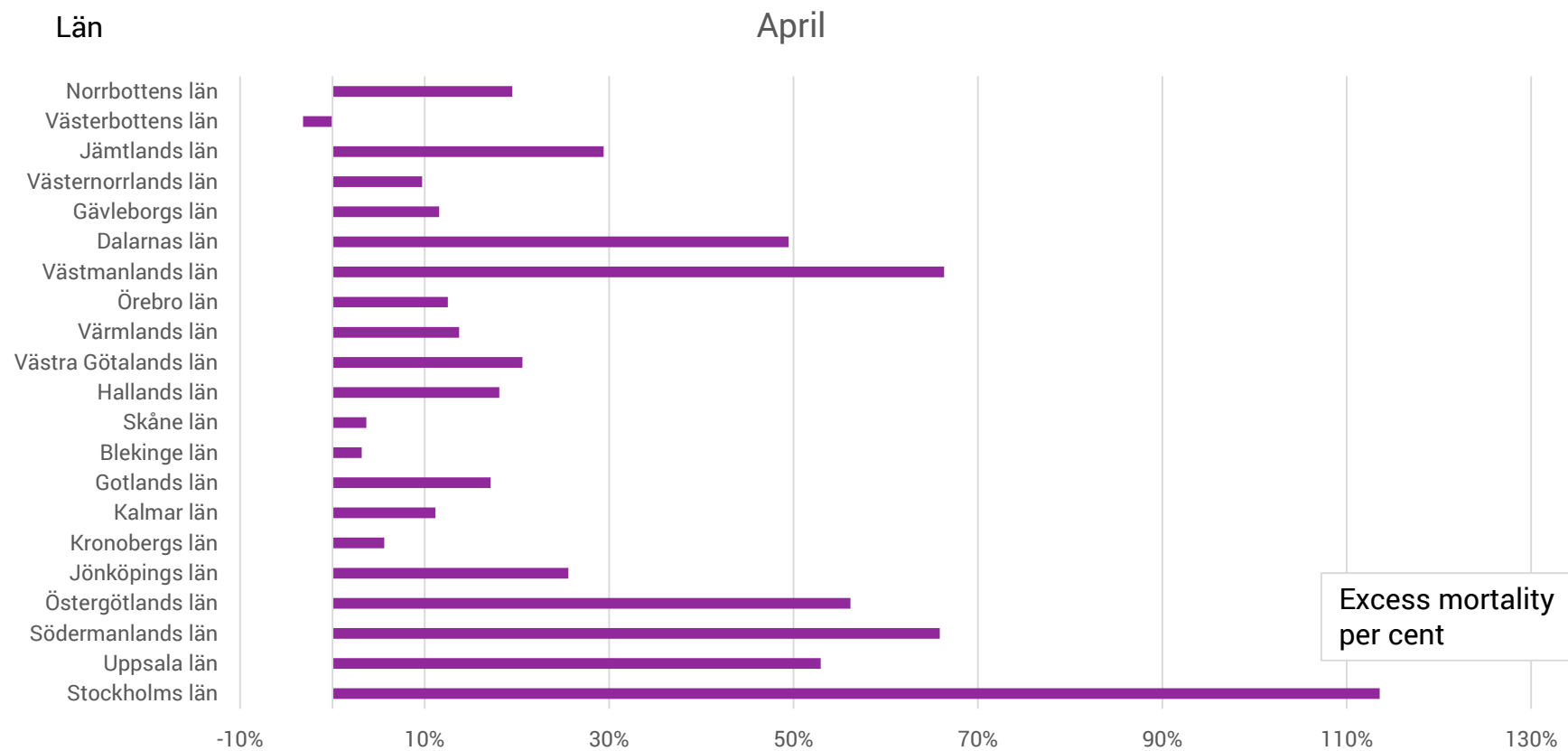
# Some statistics



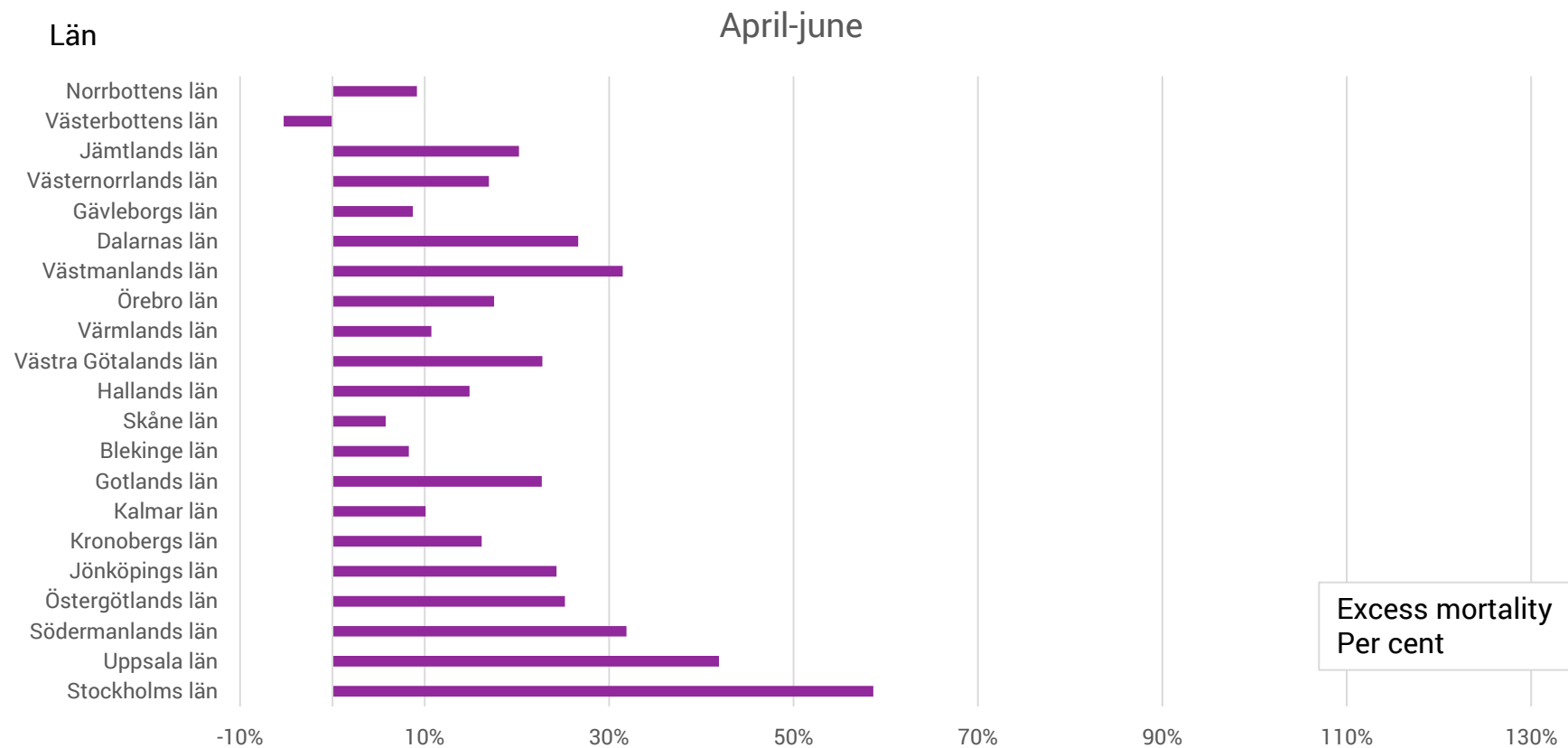
# Some statistics



# Some statistics



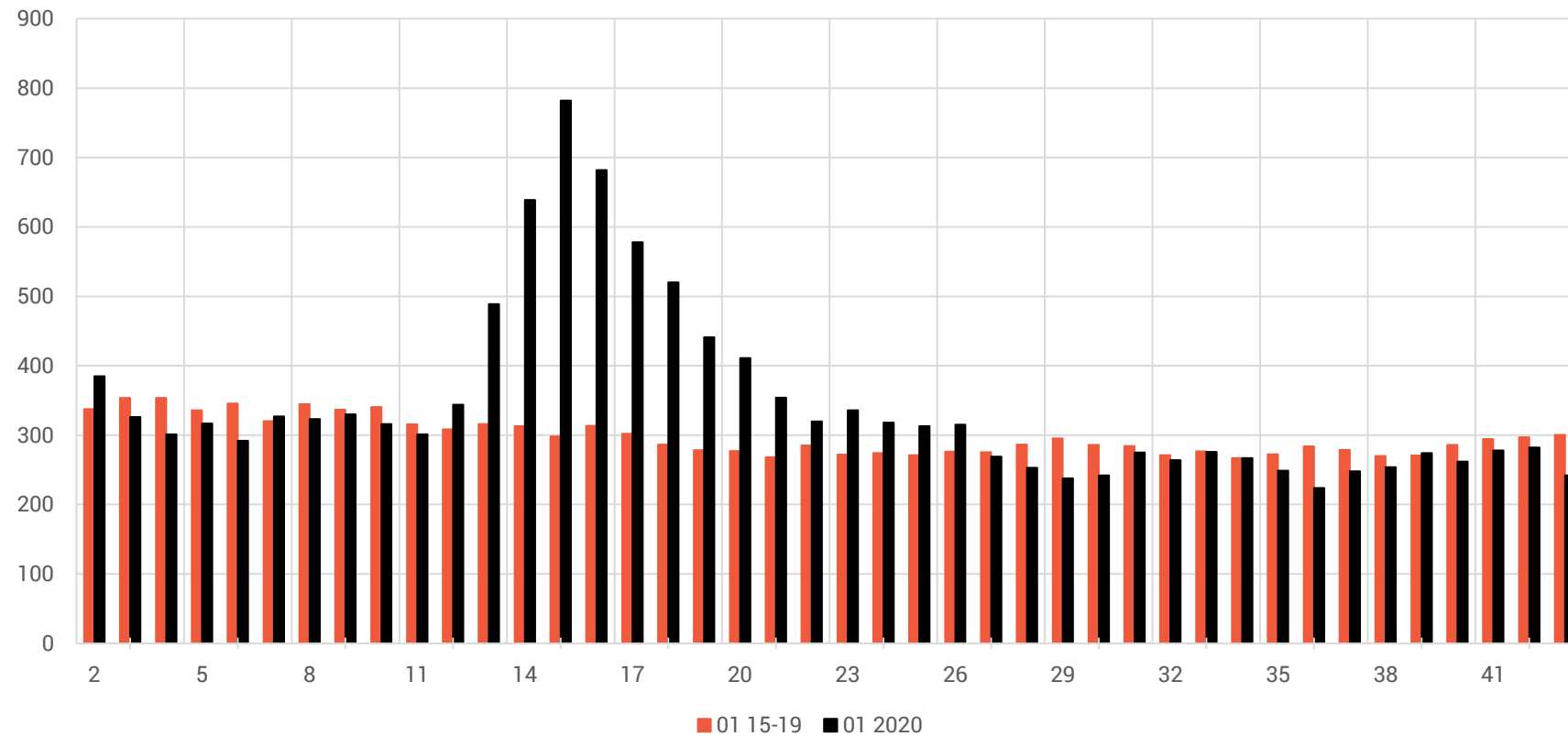
# Some statistics





# Some statistics

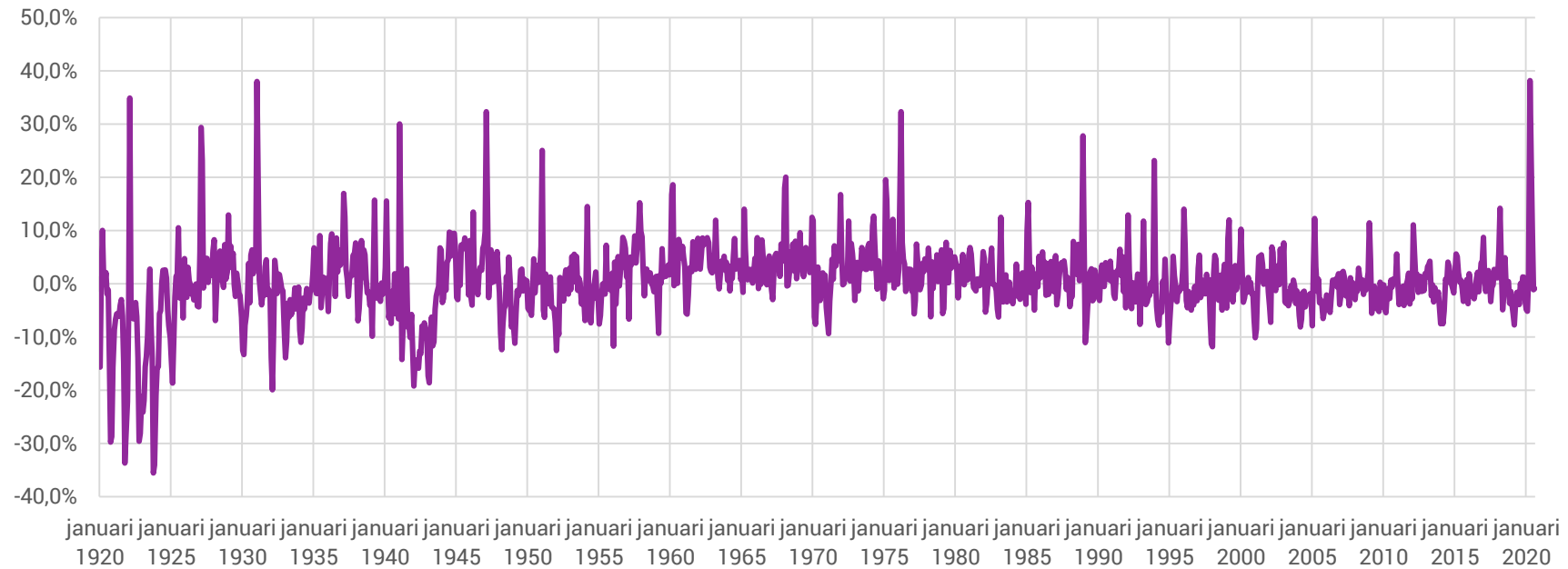
Stockholm



# Some statistics

Per cent

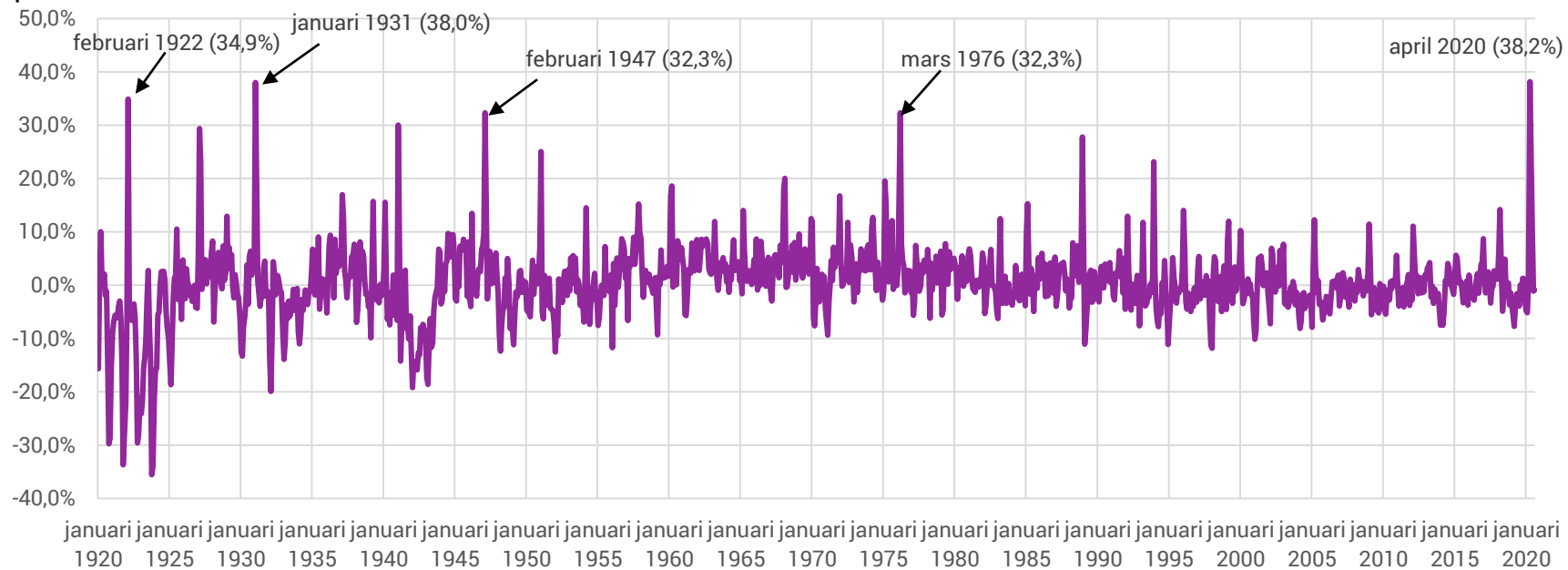
Excess mortality, per cent



# Some statistics

Överdödlighet  
procent

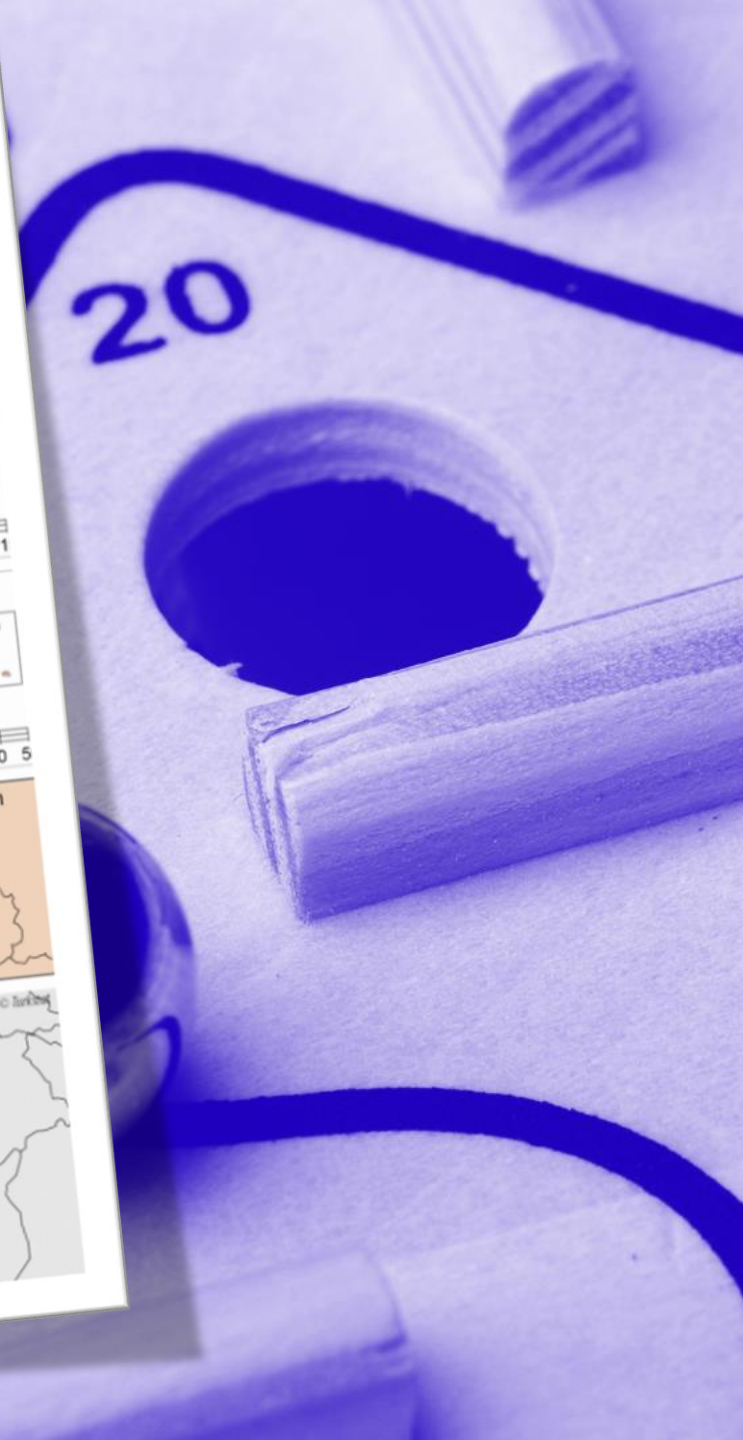
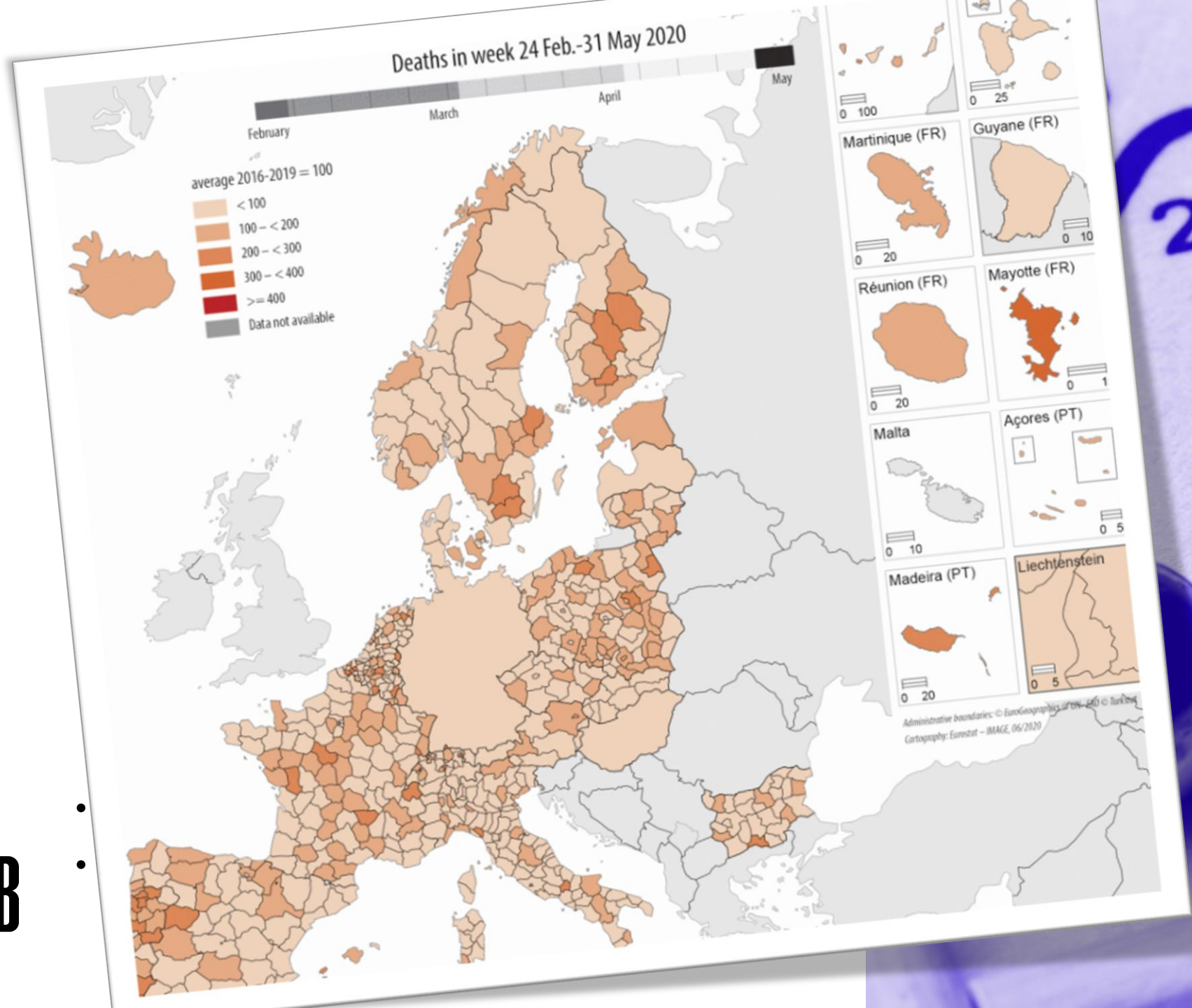
Överdödlighet procent



# International

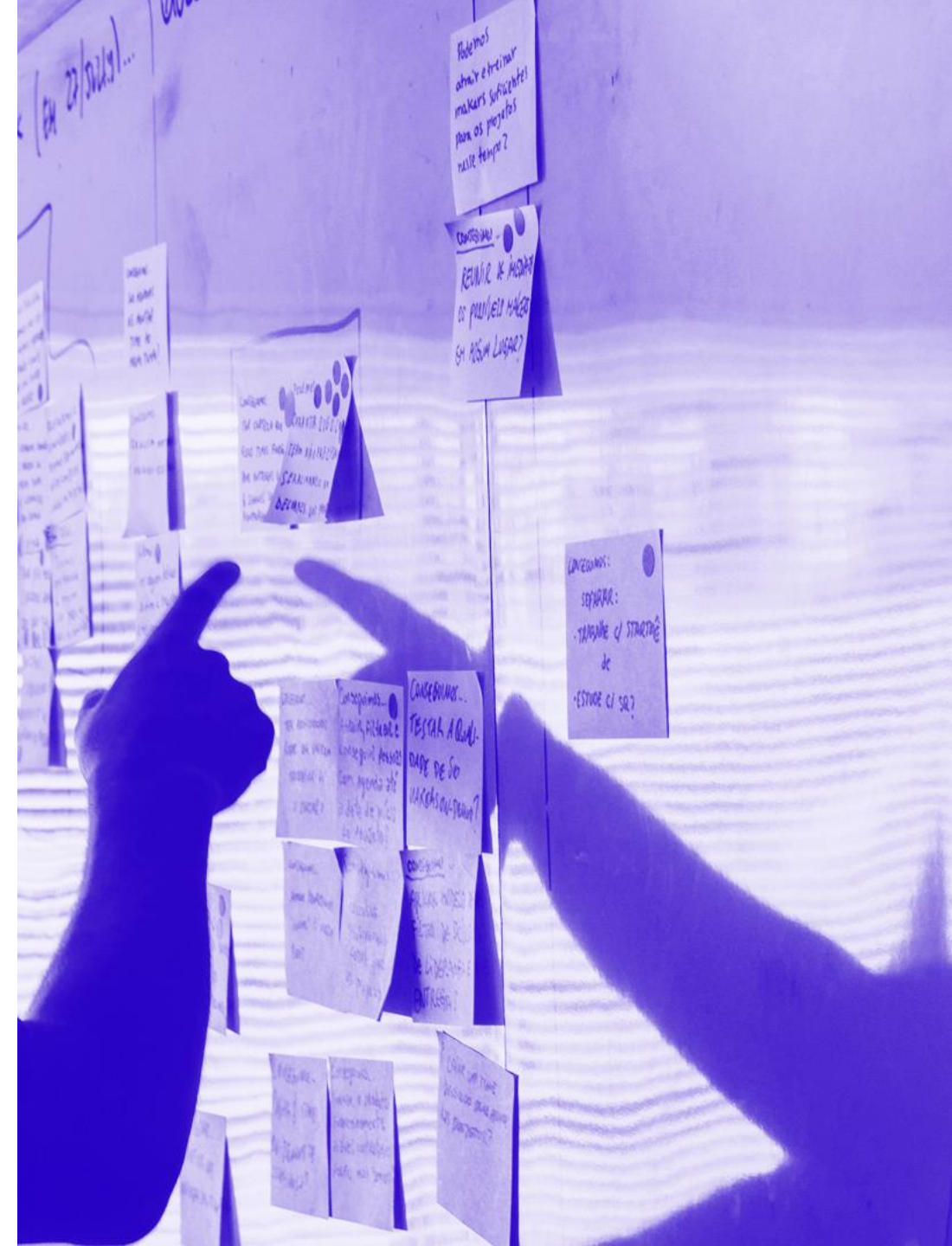
- Number of deaths by week 2000-2020
  - Launched by Eurostat 29/4
  - May: 15 EU-, 4 EFTA- och 4 Non-EU-countries
  - Now: 26 EU plus another 8 incl. UK, Norway and Switzerland



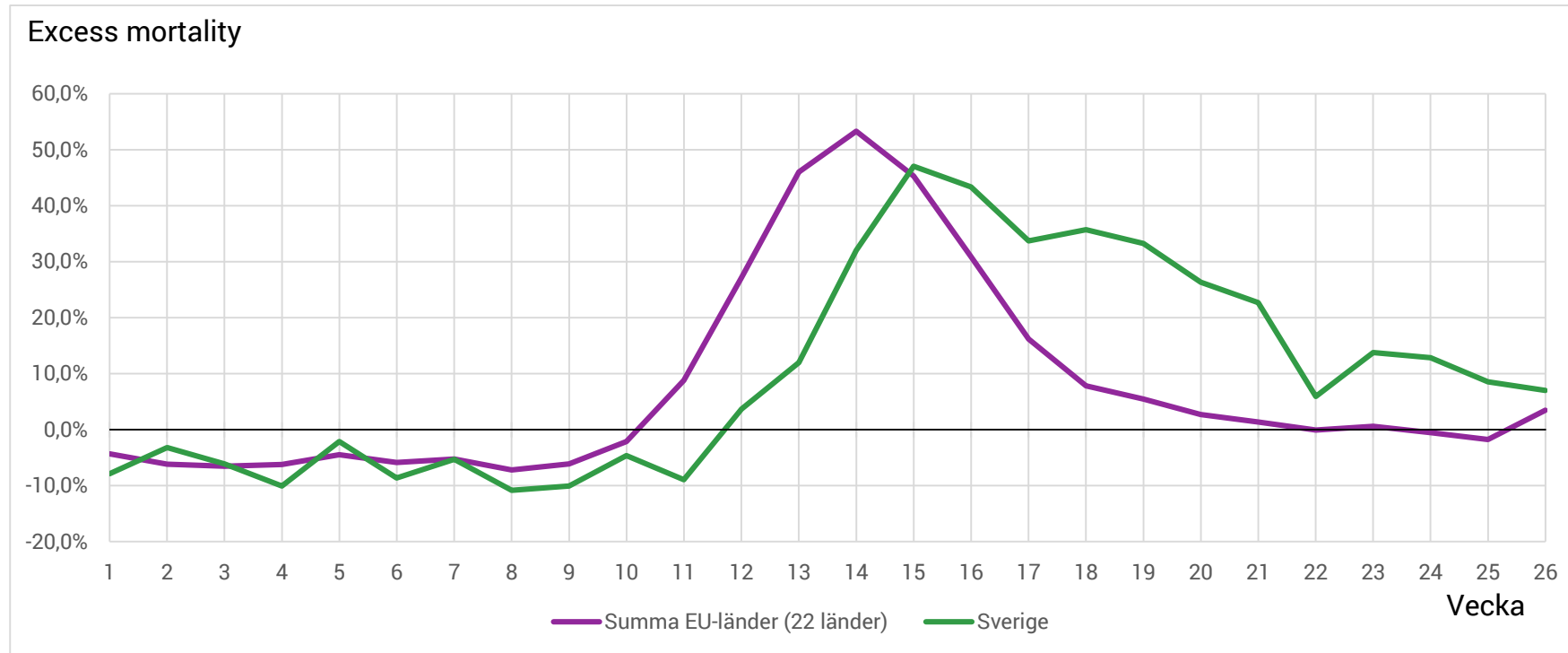


# In the future

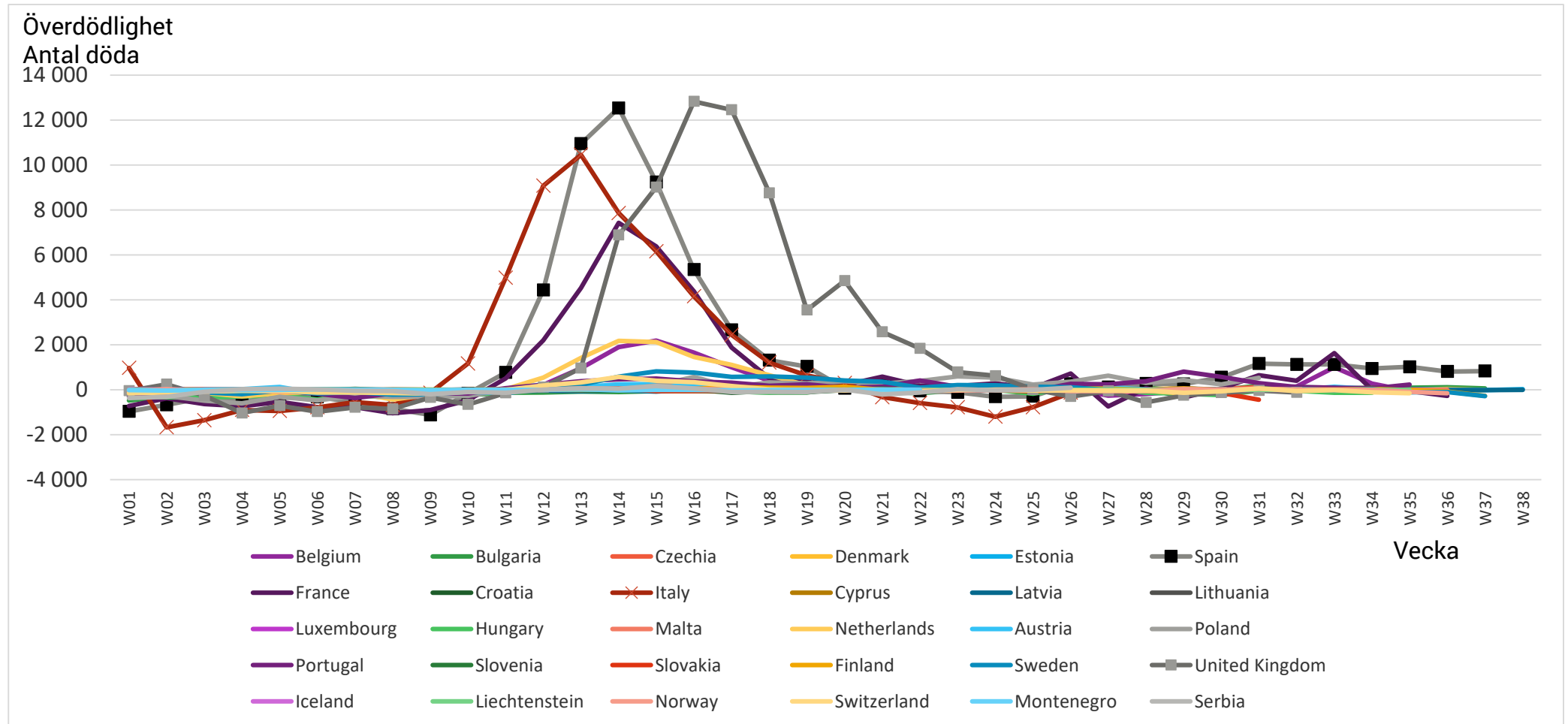
- ESS Recovery Dashboard
  - > About 20 indicators
  - > Excess Mortality (month)



# Some international statistics

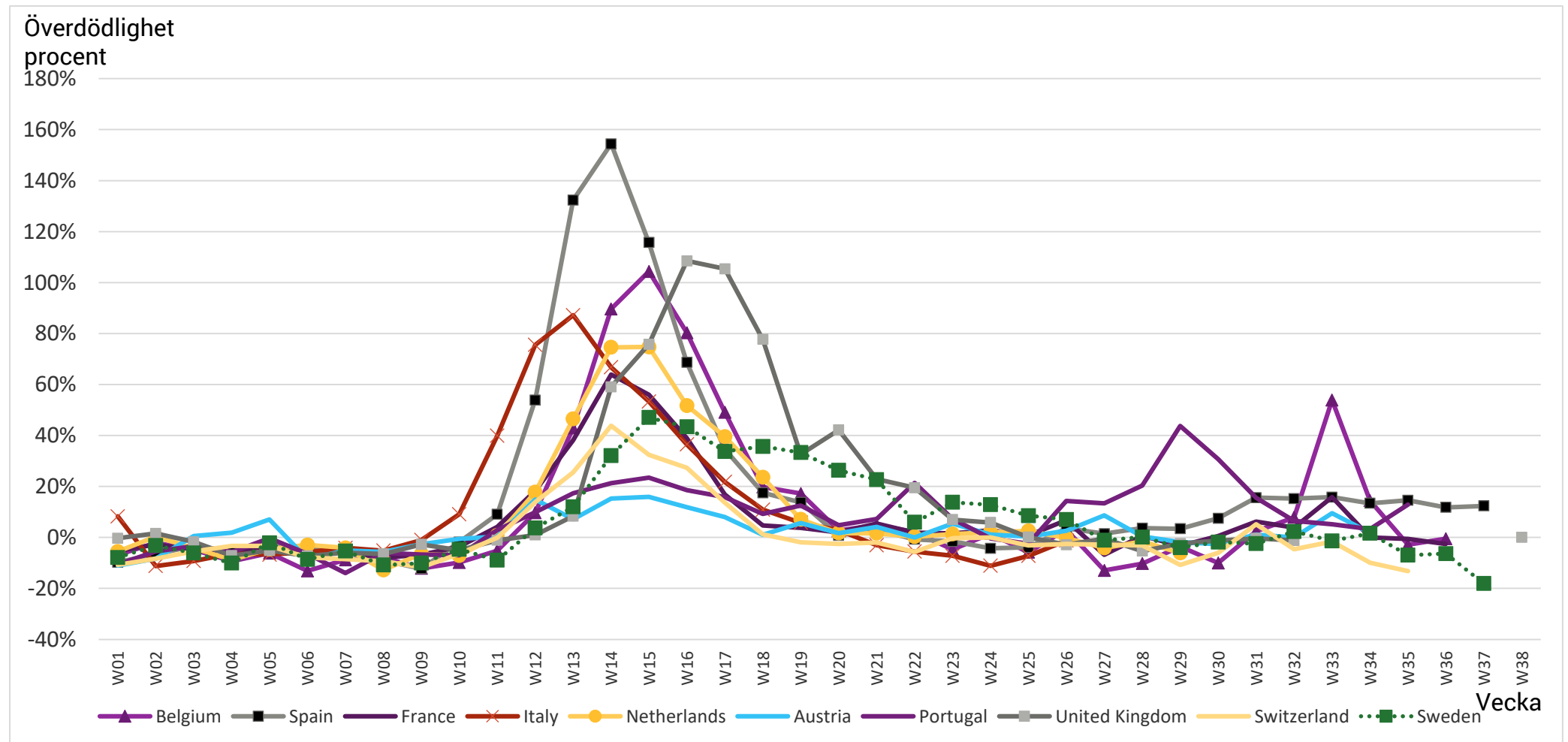


# Some international statistics

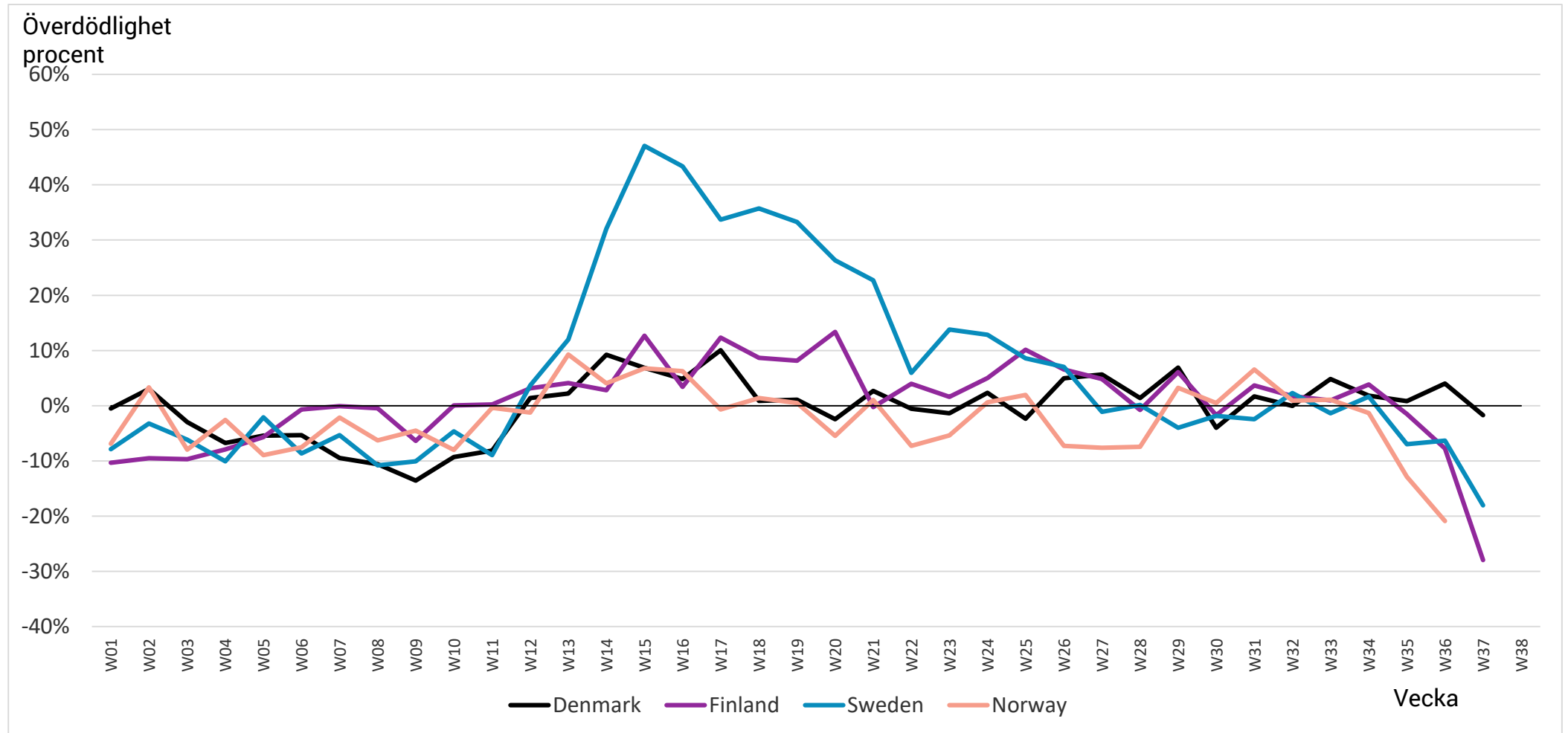




# Some international statistics



# Some international statistics



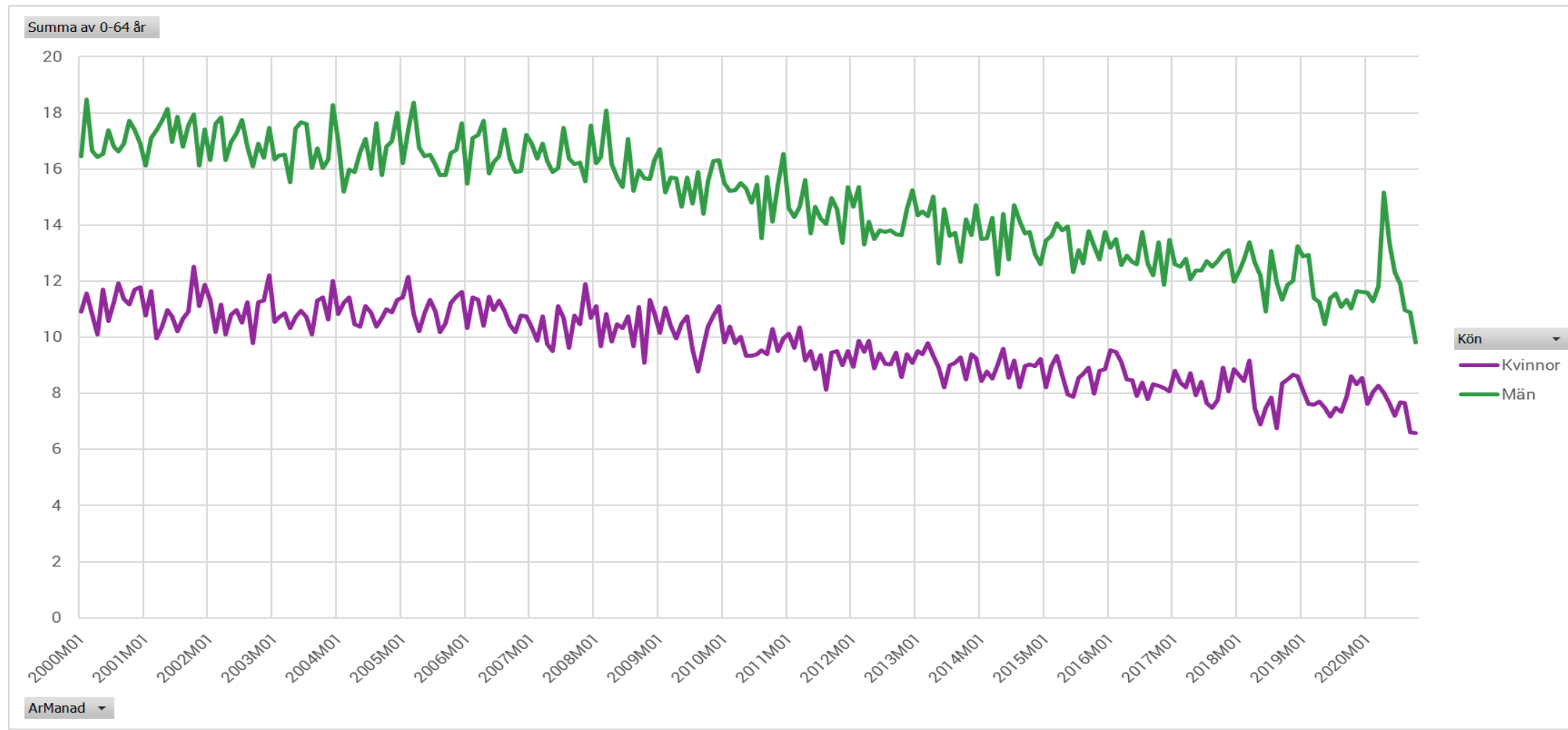
# Population statistics in the shadow of the corona pandemic

Tomas Johansson

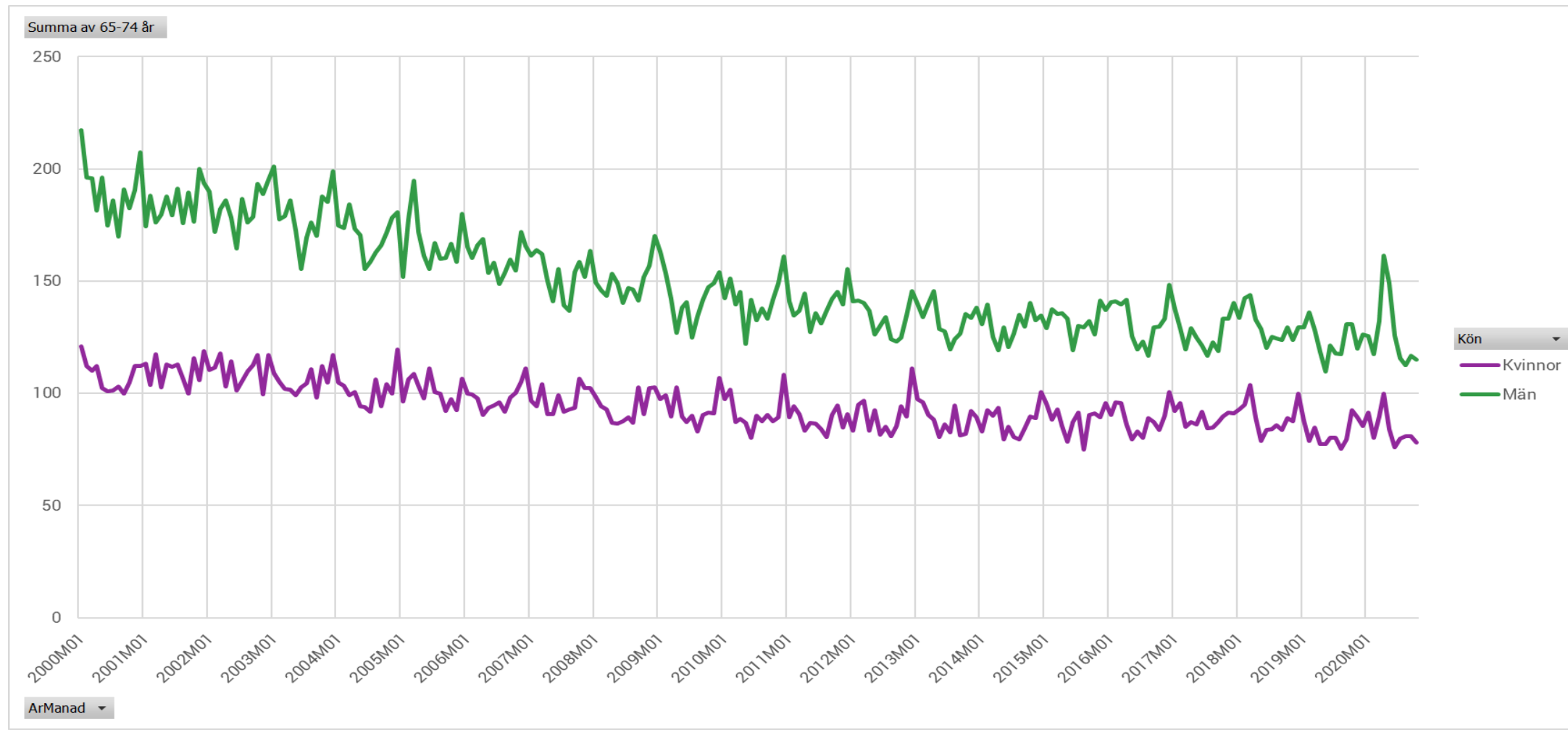
[Tomas.johansson@scb.se](mailto:Tomas.johansson@scb.se)



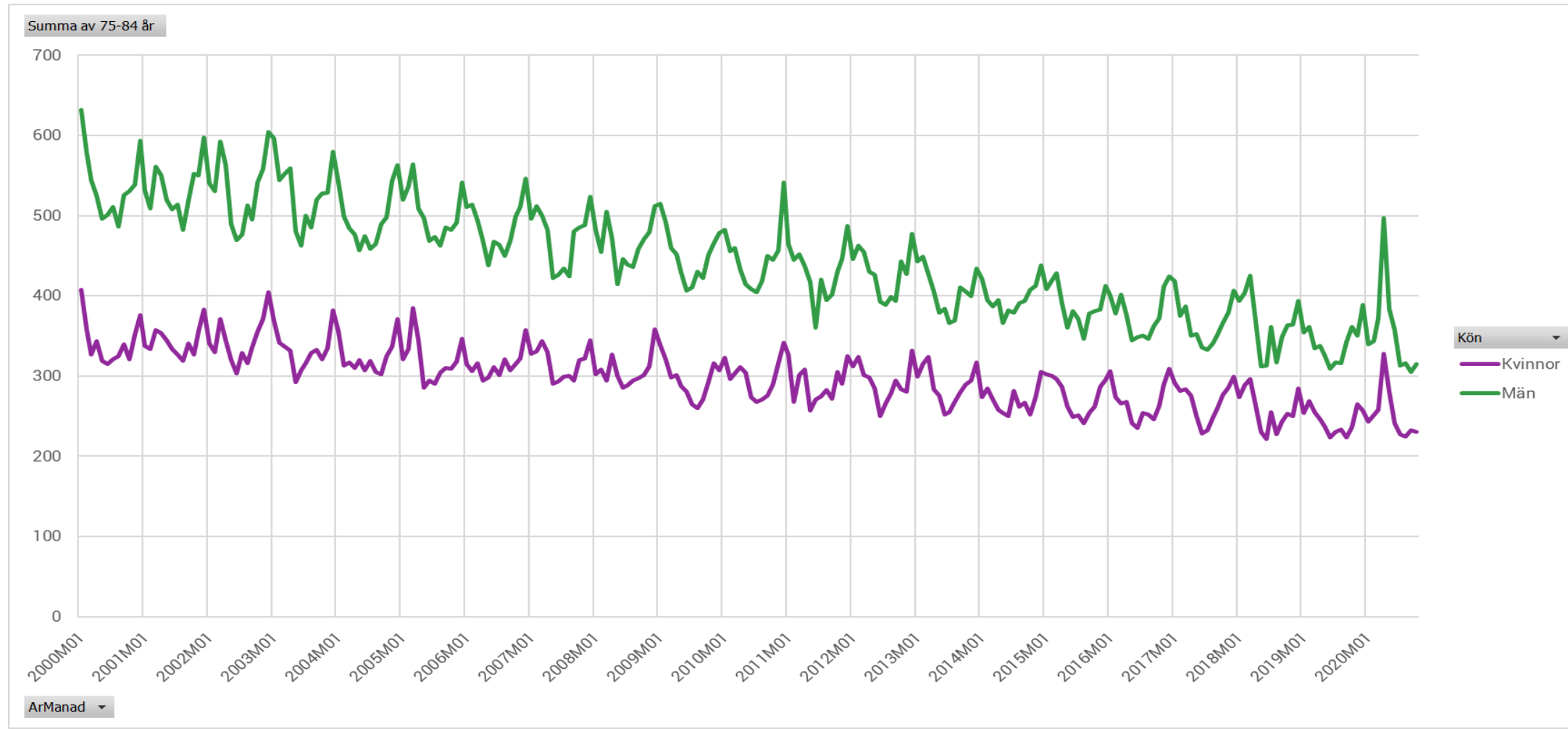
# Deaths by 100 000 by age and sex



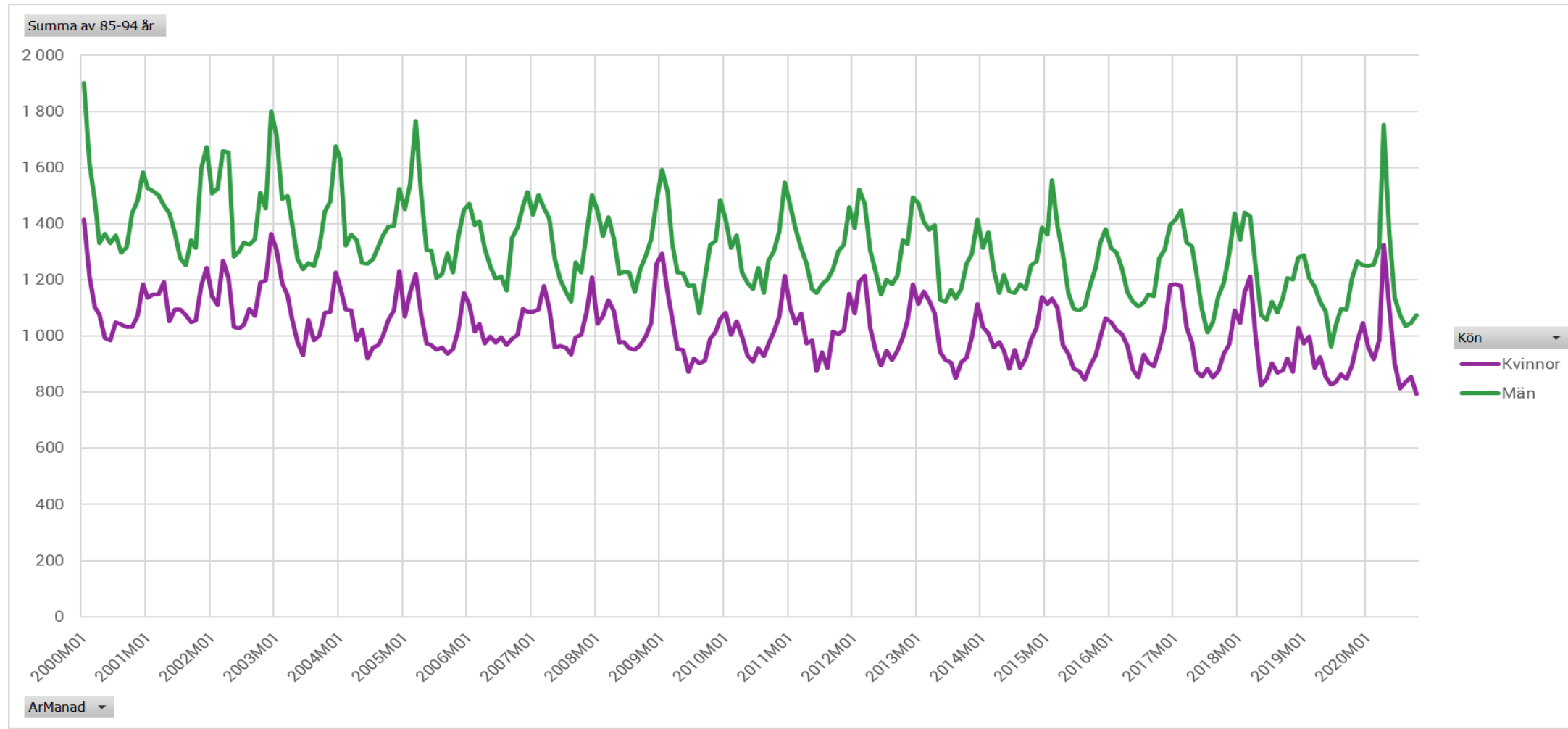
# Deaths by 100 000 by age and sex



# Deaths by 100 000 by age and sex



# Deaths by 100 000 by age and sex



# Deaths by 100 000 by age and sex

